

STABILIZER SOLUTIONS BASED ON CUSTOMERS' QUESTIONS

AVOIDING BACKING BLUNDERS

Introducing Our Speaker:



Nancy Mini is Madeira USA's senior marketing coordinator and backing specialist for the E-Zee Backing & Topping® division at Madeira USA's headquarters in New Hampshire. Self-taught to run single and multi-head commercial embroidery machines, she problem solves, creates stitch outs for illustrating articles in trade press, and provides stitched color samples for large companies. As a product expert, she often leads internal product trainings with an emphasis on backing stabilizers and toppings. She is Madeira's go-to person when products need testing and is often called upon to help customers overcome embroidery challenges.

Thread | Backing | Bobbins | Accessories

E-Zee BACKING
& TOPPING®
a division of
MADEIRAUSA

STABILIZER SOLUTIONS BASED ON CUSTOMERS' QUESTIONS

AVOIDING BACKING BLUNDERS

What we will cover today:

- How do I know when to add more stabilizer? Are fabrics a limiting factor?
- What is new on the market? And what is a Go-To backing?
- How and when do I work with Stick-On and not gum up my needles?
- How do I get my performance wear to stop puckering?
- What do I use on a woven dress shirt? Is this a light or heavy weight fabric?

STABILIZER SOLUTIONS BASED ON CUSTOMERS' QUESTIONS
AVOIDING BACKING BLUNDERS

*“What is the **MAXIMUM NUMBER OF STITCHES**
in a design before you have to add more stabilizer?*

WHAT DO I USE FOR WHAT? *What is out there?*

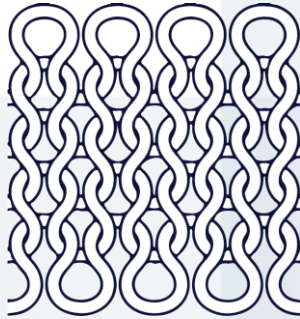
What is new? **IS THERE A GO-TO BACKING?”**

STABILIZER SOLUTIONS BASED ON CUSTOMERS' QUESTIONS

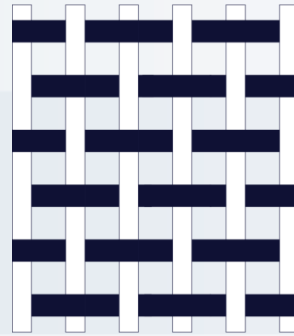
AVOIDING BACKING BLUNDERS

Choosing a Cut Away vs. a Tear Away Stabilizer

Use a Cut Away

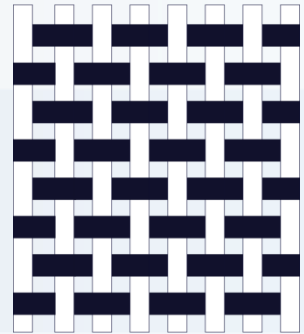


Knit Fabric
Stretchy
Unstable



Lightly Woven Fabric
Non-Stretchy
Somewhat Stable

Use a Tear Away



Tightly Woven Fabric
Non-Stretchy
Stable

STABILIZER SOLUTIONS BASED ON CUSTOMERS' QUESTIONS

AVOIDING BACKING BLUNDERS

How do Fabrics Affect the Choice of Stabilizers



Pique



Performance Wear



Silk



Corduroy



Light Woven



Denim



Canvas



Terry Cloth

STABILIZER SOLUTIONS BASED ON CUSTOMERS' QUESTIONS

AVOIDING BACKING BLUNDERS

How do Elements of a Design Affect Choice of Stabilizer?

Both designs have about 10,000 Stitches



Design Type: Light – Large design with open stitches and will need less stabilizing



Design Type: Heavy – Small design with fill and satin stitches and will need more stabilizing

STABILIZER SOLUTIONS BASED ON CUSTOMERS' QUESTIONS
AVOIDING BACKING BLUNDERS

*“Using **STICK ON** stabilizers gums up my needle.
...I have to put numbers on short sleeve shirts,
ABOVE THE SLEEVE HEM LINE. I am not sure
how to do this since my smallest hoop is
TOO BIG TO FIT INSIDE THE SLEEVE!”*

STABILIZER SOLUTIONS BASED ON CUSTOMERS' QUESTIONS

AVOIDING BACKING BLUNDERS

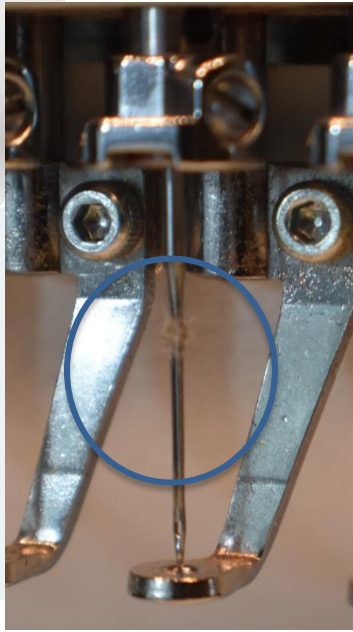
E-Zee Tear® Stick-On 1.5 oz. Stabilizer



STABILIZER SOLUTIONS BASED ON CUSTOMERS' QUESTIONS

AVOIDING BACKING BLUNDERS

Is Stick-On Stabilizer Gumming up Your Needles?



Needles should not gum up if product is treated with care. Here's how to avoid annoying gummy build-up:

- Make sure product has been stored in low heat and humidity
- Apply a small amount of white machine oil on needle
- Use a non-stick type needle
- Clean off the needles regularly



STABILIZER SOLUTIONS BASED ON CUSTOMERS' QUESTIONS

AVOIDING BACKING BLUNDERS

Embroidering on the Edge of a Garment Using E-Zee Tear® Stick-On Stabilizer



- Embroiders easily on the edge of most garments
- E-Zee Tear® Stick-On 1.5 oz. adheres to most fabrics
- Fabric is held firmly while embroidering
- Easy and fun!

STABILIZER SOLUTIONS BASED ON CUSTOMERS' QUESTIONS

AVOIDING BACKING BLUNDERS

*“Most of the stuff I do is **PERFORMANCE MATERIAL**, but I also do jackets and fleece (with topping). I currently use 2 No-Shows and 1 Tear Away for 90% of it. Am I ok, or is there a better combination I should be using? ...It’s always a challenge choosing the right stabilizer and the right number of layers when you have a dense design going on performance wear. **THEY TEND TO CURL** and not lay flat. ...On ultra-thin performance polo shirts it’s quite difficult to embroider without getting any bunching or bulging once completed. The shirts are so light that it creates a **HEAVY LOGO FEEL** to the shirt when completed if not done properly... I have a couple business left chest logos I do that are a rectangle shape with **OVER 10K STITCHES** and when I put them on **POLYESTER POLOS** they want to curl after a wash or two.”*

STABILIZER SOLUTIONS BASED ON CUSTOMERS' QUESTIONS

AVOIDING BACKING BLUNDERS

Always “Think Light” When Embroidering on Performance Wear Fabrics



- Use underlay to stabilize and fill
- Consider the “push and pull” of the fabric
- Digitize from the center, out, from the bottom, up
- Avoid high stitch count designs

For more information about working with performance wear, visit Madeira USA’s past webinar:

EMBROIDERING ON SUPER STRETCHY
PERFORMANCE FABRICS?
THINK LIGHT

STABILIZER SOLUTIONS BASED ON CUSTOMERS' QUESTIONS

AVOIDING BACKING BLUNDERS

Performance Wear - Stabilizer vs. Digitizing



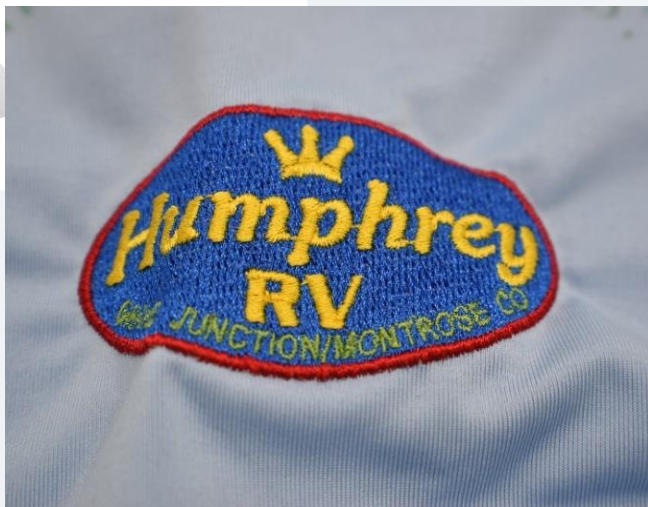
- Properly Digitized
- High stitch count logo? Consider creating a patch instead (with MFS or Badge Film)

STABILIZER SOLUTIONS BASED ON CUSTOMERS' QUESTIONS

AVOIDING BACKING BLUNDERS

Performance Wear – Properly Digitized Design

Same design, same fabric – after laundering



1 piece of E-Zee Weblon No Show



2 pieces of E-Zee Weblon No Show
1 piece of E-Zee Tear® Lightweight 1.0 oz.

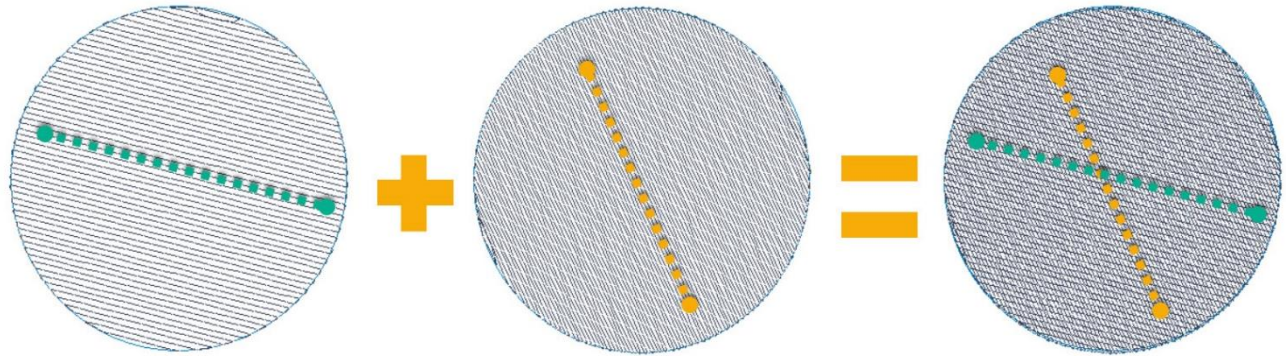
Thread | Backing | Bobbins | Accessories

E-Zee BACKING & TOPPING®
a division of
MADEIRA USA

STABILIZER SOLUTIONS BASED ON CUSTOMERS' QUESTIONS

AVOIDING BACKING BLUNDERS

Tips to Digitizing for Performance Wear Fabrics



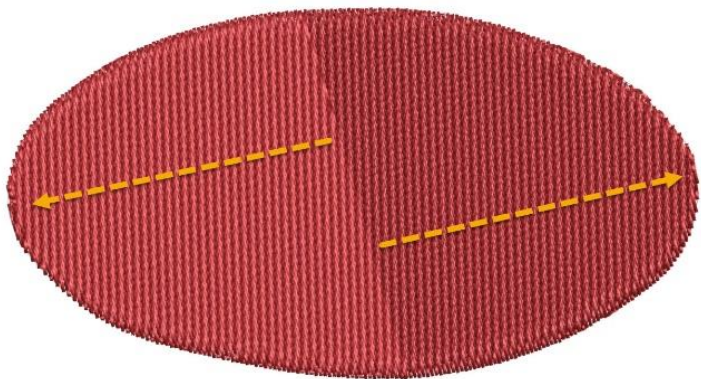
Used here are 2 layers of open, or Tatami, underlay with a small stitch length.
Fill stitches are angled 105 to 120 degrees. Avoid 45, 90, and 0/180 degrees.

STABILIZER SOLUTIONS BASED ON CUSTOMERS' QUESTIONS

AVOIDING BACKING BLUNDERS

Tips to Digitizing for Performance Wear Fabrics

For large designs, stitch from the center, out!



- Helps to keep stretch to a minimum
- Avoids the “push and pull” of the garment
- Only necessary for larger fill areas of 3” or more

STABILIZER SOLUTIONS BASED ON CUSTOMERS' QUESTIONS

AVOIDING BACKING BLUNDERS

“I continue to have issues with **DRESS SHIRTS**. *On cotton type shirts I get buckling/pinching of the fabric.* I've tried regular backing, performance type backing, **2 OR 3 SHEETS AND TOPPER**. *Any cure for this would be helpful.* ...I am pretty sure the **WEBLON NO-SHOW** is for men's dress shirts that are white or very light and tight, white shirts (light or dark colored but very thin and tight) and babies' onesies, bibs or any material that rubs against your skin. Is this correct?”

STABILIZER SOLUTIONS BASED ON CUSTOMERS' QUESTIONS

AVOIDING BACKING BLUNDERS

Dress Shirts = Lightly Woven Fabric



- Properly digitized
- E-Zee Cut® Performance or...
- E-Zee Weblon No Show stabilizers and add....
- A lightweight Tear Away
- Use quality garments

Thread | Backing | Bobbins | Accessories

E-Zee BACKING
& TOPPING®
a division of
MADEIRA USA

STABILIZER SOLUTIONS BASED ON CUSTOMERS' QUESTIONS

AVOIDING BACKING BLUNDERS

Dress Shirts - Combining Cut Away with Tear Away



1 piece of E-Zee Cut® Performance Stabilizer



2 pieces of E-Zee Cut® Performance Stabilizer and
1 piece of E-Zee Tear® Lightweight Stabilizer

STABILIZER SOLUTIONS BASED ON CUSTOMERS' QUESTIONS

AVOIDING BACKING BLUNDERS

Summary

“As a new member of the embroidery family, I have found that the backing that is used will save the project. I have learned (through trial and lots of errors) that the quality of your stabilizer does matter. I initially purchased my stabilizer from the ‘online giant,’ and I purchased the industrial strength size of every thing. That was a mistake. The Tear Away wouldn't, the Wash Away didn't, and the Stick-On is still on it, resembling chewing gum. I ripped so many stitches, that now those industrial strength size stabilizers are little more than door stops. Quality (No matter the cost) yields the best results.”

STABILIZER SOLUTIONS BASED ON CUSTOMERS' QUESTIONS

AVOIDING BACKING BLUNDERS

Thank you!

Carmen Bell

Stephanie Bowen, Worldwide Sport Supply

Reggi Coles, Threadvertizing.com

Dee Dee Huffmann, The Untouchables Custom Embroidery

Kurt Kelso, New End Zone

Eileen Lacko, Tidewater Incentives

Laurie Malm, Lollipops Quilt Shop

Arlis Mulder, Ultimate Stitches

Susan Olvey, Keepin U in Stitches

Mackenzie Ramos, Solstice Enterprise

Ryan Wood, Alternate Universe, LLC

Thread | Backing | Bobbins | Accessories

E-Zee BACKING
& TOPPING®
a division of
MADEIRAUSA

STABILIZER SOLUTIONS BASED ON CUSTOMERS' QUESTIONS
AVOIDING BACKING BLUNDERS

A Special Discount to Thank You!

SAVE 10% ON YOUR NEXT ONLINE ORDER

Include any E-Zee Backing® or E-Zee Topping® in your order and use promo code: **EZW-10** at check out online.

No other discounts apply. Discount applied to single unit pricing. This promo code cannot be used to further reduce pricing of thread collections, thread kits, starter packs or drop ship items. VALID ONLINE ONLY.

Savings cannot be applied to previous orders. ACT SOON! Offer valid through July 1, 2019.