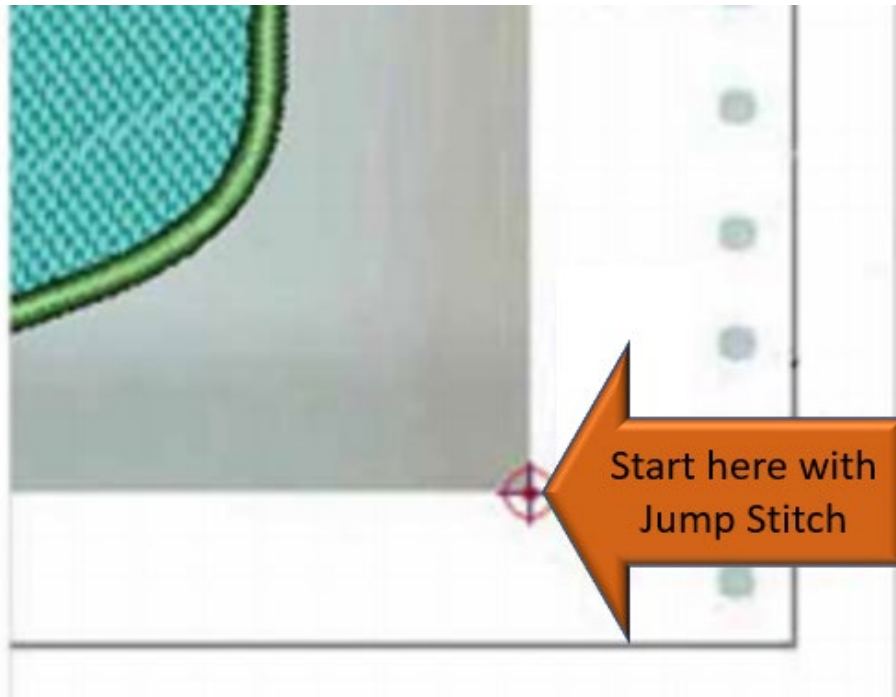


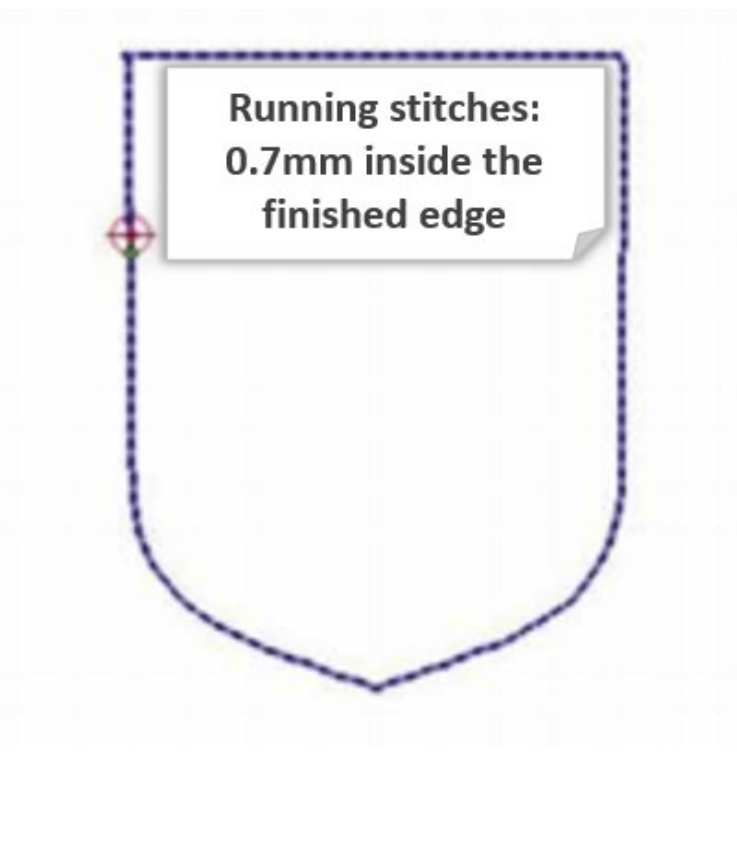


Digitizing recommendations for Madeira's Multi-functional Frame System and E-Zee Badge Film

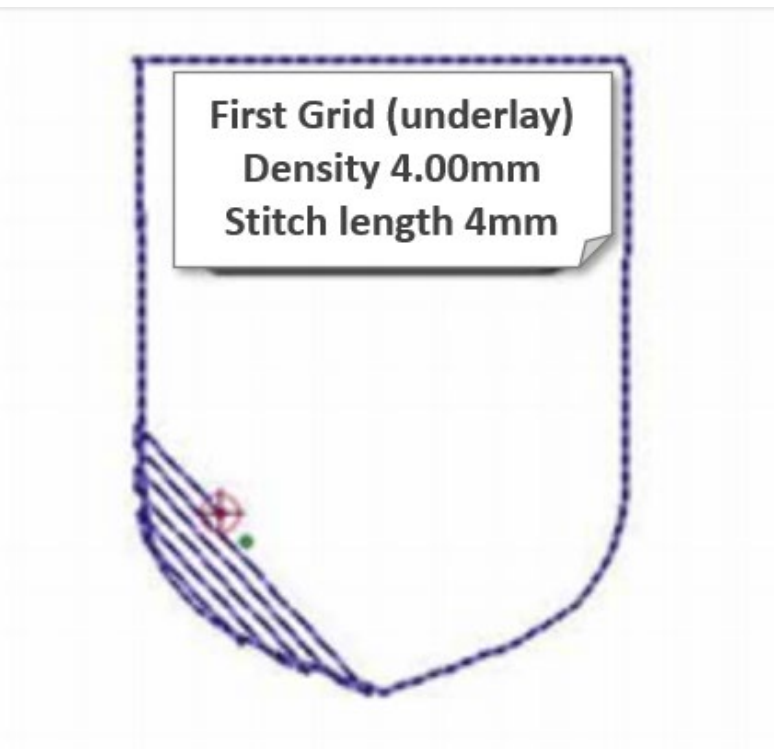


1. Set the first Jump Stitch to lower right corner of the pre-frame. Continue with another jump stitch to the start of the design.

Please note, this first step is only necessary when using the Multi-Functional Frame System (MFS) pre-frames if you are planning to remove and re-insert the pre-frame to continue stitching out the design or attaching a patch to the finished garment.

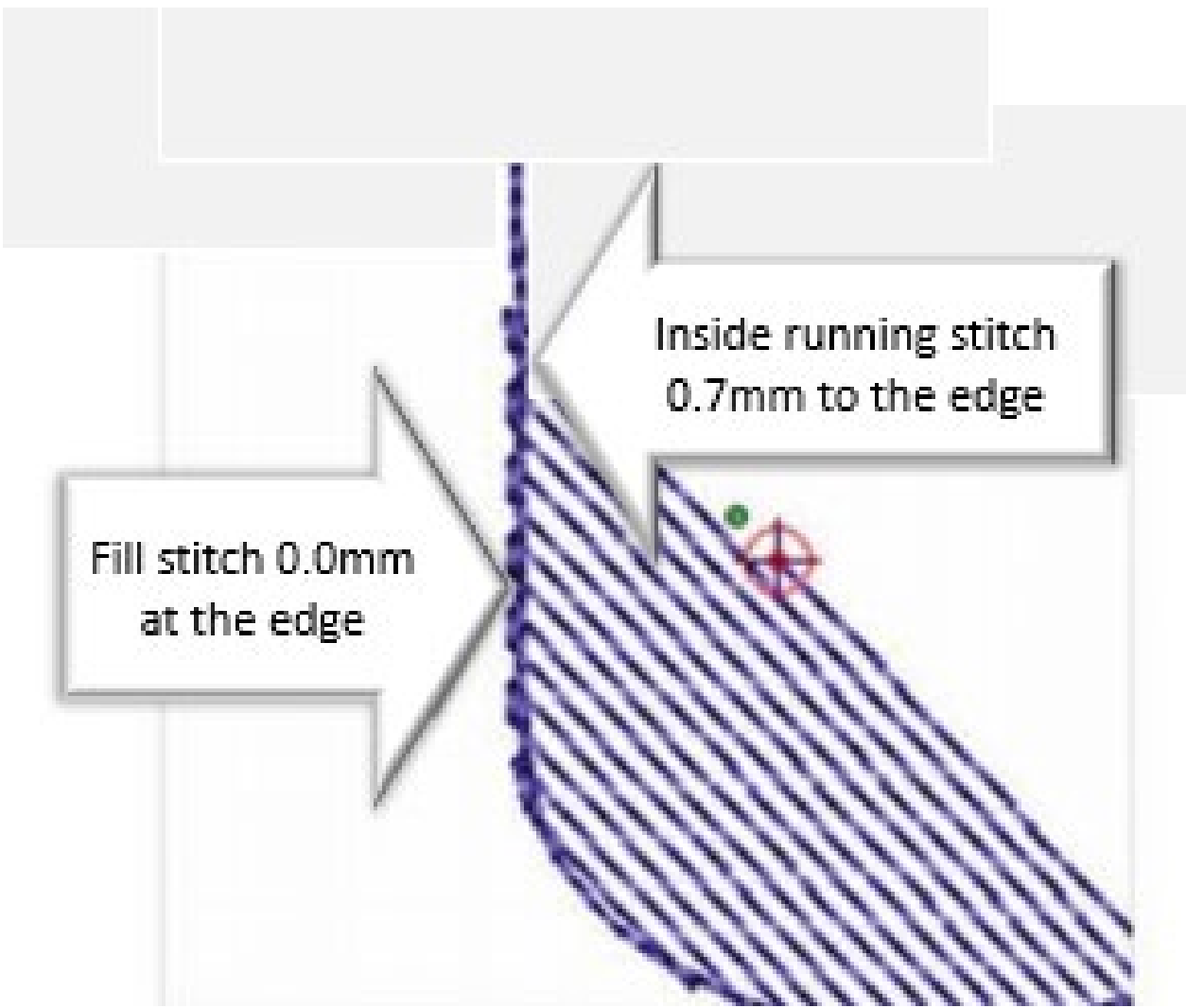


2. Digitize the outline of the design with running stitches. Set the outline at a distance of 0.7mm inside the badge edge.



3a. After digitizing the outline, set the first grid (underlay) with a fill stitch using a density of 4.00mm and a stitch length of 4mm.





3b. Set the first diagonal grid exactly at the edge.

The grid's fill stitches end directly at the finished badge edge. The running outline previously stitched, and the grid's fill stitch will overlap.



4. Use a running stitch again to outline the badge's border, as shown back in step 2.



5. Next digitize a second grid (underlay) with a fill stitch. The second grid should be at a 45 degree angle to the first grid.

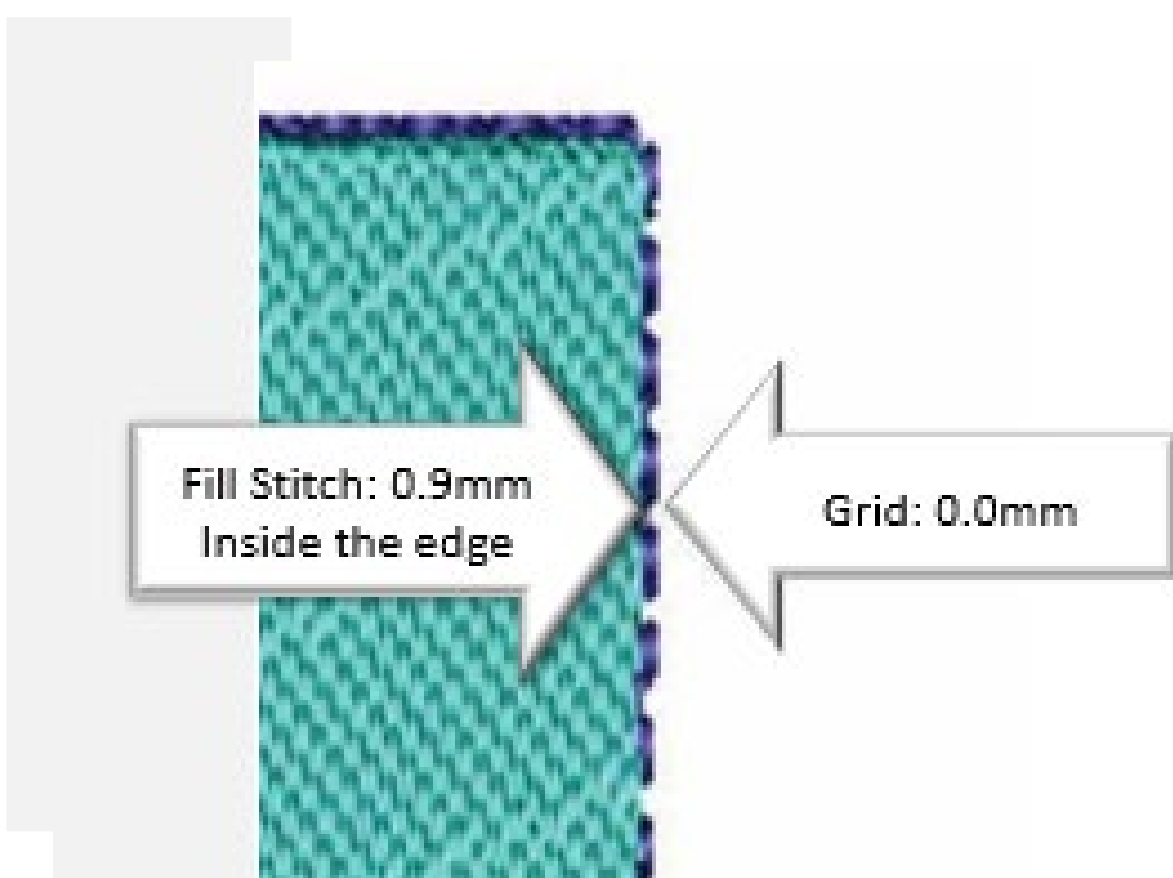


5b. Once again, set the second diagonal grid exactly at the edge.

The grid's fill stitches end directly at the finished badge edge. The running outline previously stitched, and the grid's fill stitch will overlap.



6. Add a third grid at a slightly different angle than the first two grids. You have now created the foundation upon which you will add the fill stitches and design aspect of your finished design.



7. Creating the upper fill stitches.

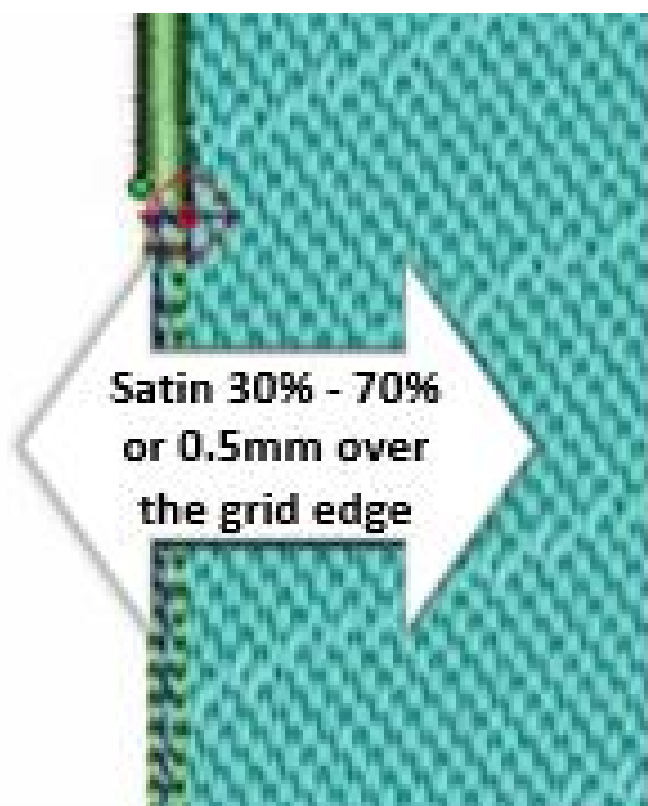
To compensate for pulling the plastic away from the badge as you are stitching it out, the upper fill stitch direction should be lengthwise to the running direction of the Pre-Frames.

Here again, keep a distance of approximately 0.5mm to 1.0mm between the fill stitches and the badge edge.



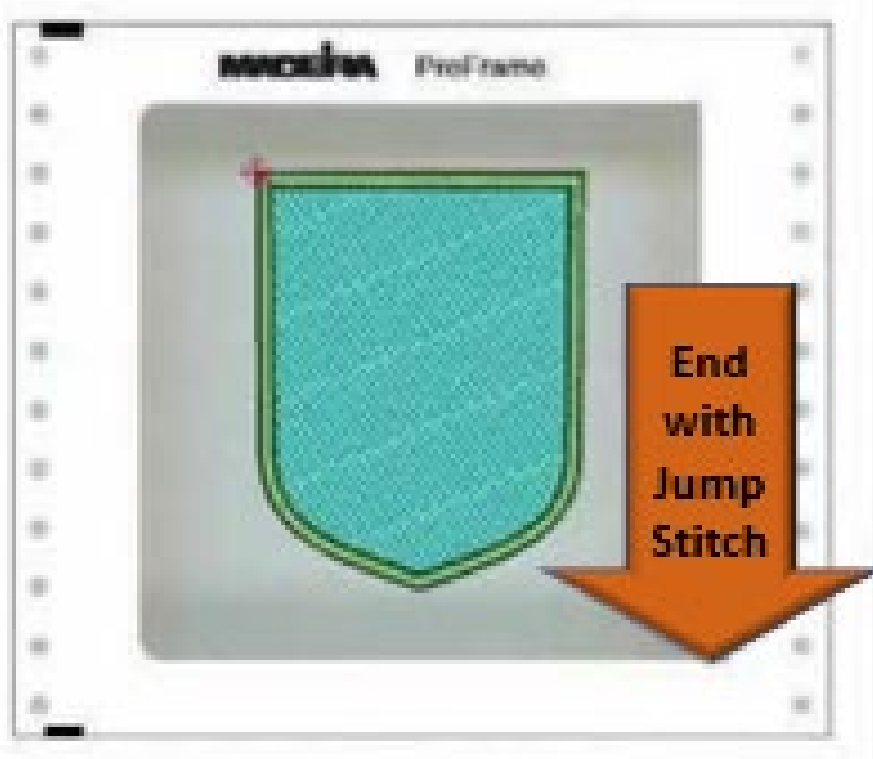
8. To achieve a clean satin stitch border it is recommended that you add double outline underlay with running stitches .

These running stitches should be digitized 0.7mm inside the satin stitch border.



9. Complete the edge of the badge with satin stitches.

It is important that the satin stitches overlap both the outside of the badge edge by 0.5mm, while the opposite side of the satin stitch width should extend inside the badge edge.



10. After completing the embroidered badge, set the jump stitch back to the starting point (lower right corner of the pre-frame).

Please note, this last step is only necessary when using the MFS pre-frames if you are planning to remove and re-insert the pre-frame to continue stitching out the design or attaching a patch to the finished garment.